

PART OF S.W. 1/4 OF
SECTION 8, T.6N.,R.1W., S.L.B.&M.

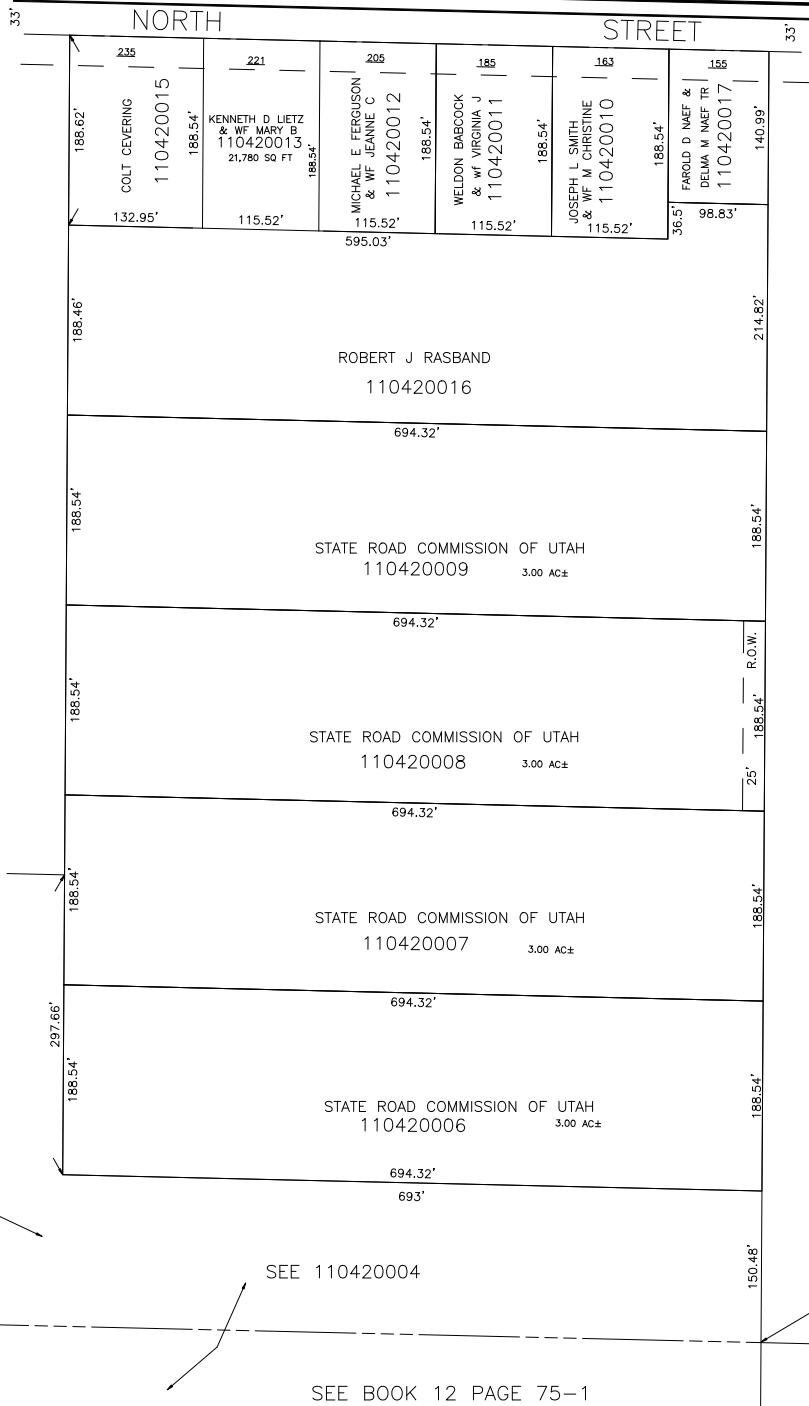
IN OGDEN CITY
SCALE 1" = 100'

TAXING UNIT: 25

ALSO SE PAGES 42-2,3
NOTE: S. 1/2 OF ST. NOT OPEN

SEE P. 42-3

HARRISVILLE TOWN LIMITS



SEE P. 42-2

SEE P. 43

SEE 110420004

SEE BOOK 12 PAGE 75-1